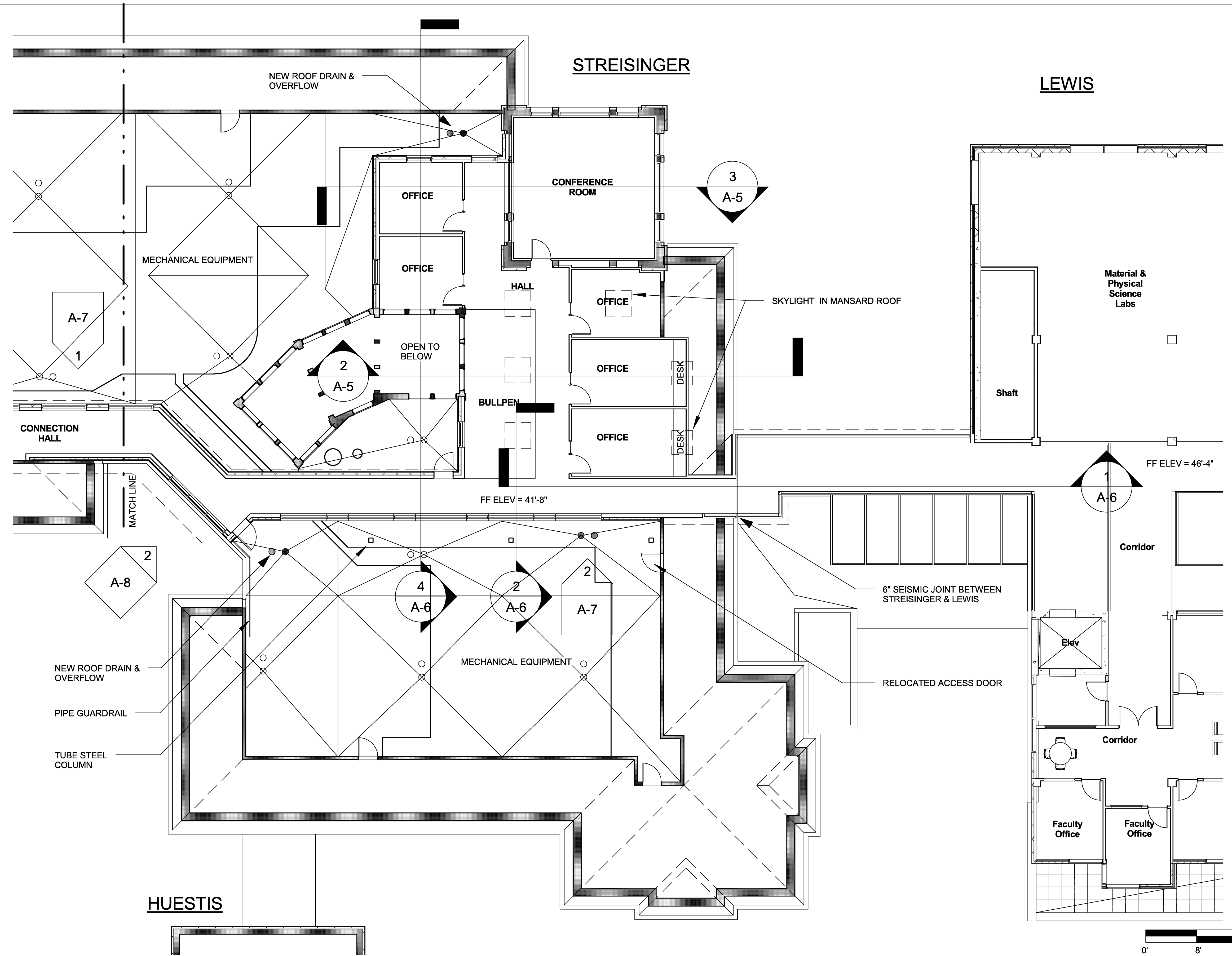


HDR Architecture, Inc. / THA Architecture, Inc.
 HDR | 1001 SW 5th Avenue | Suite 1900 | Portland, Oregon 97204 | 503.423.3800
 THA | 733 SW Oak Street | Suite 100 | Portland, Oregon 97205 | 503.227.1254

UO LISB
 Lewis Integrative Science Building

Preliminary Schematic Design
 August 20, 2009

A-1
STREISINGER ROOF CONNECTION - DEMO PLAN



HDR Architecture, Inc. / THA Architecture, Inc.

HDR | 1001 SW 5th Avenue | Suite 1900 | Portland, Oregon 97204 | 503.423.3800
 THA | 733 SW Oak Street | Suite 100 | Portland, Oregon 97205 | 503.227.1254

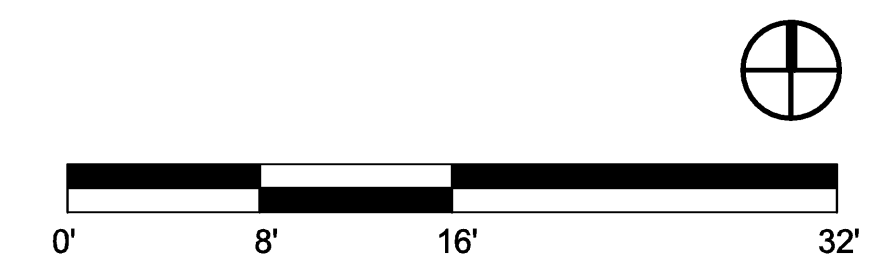
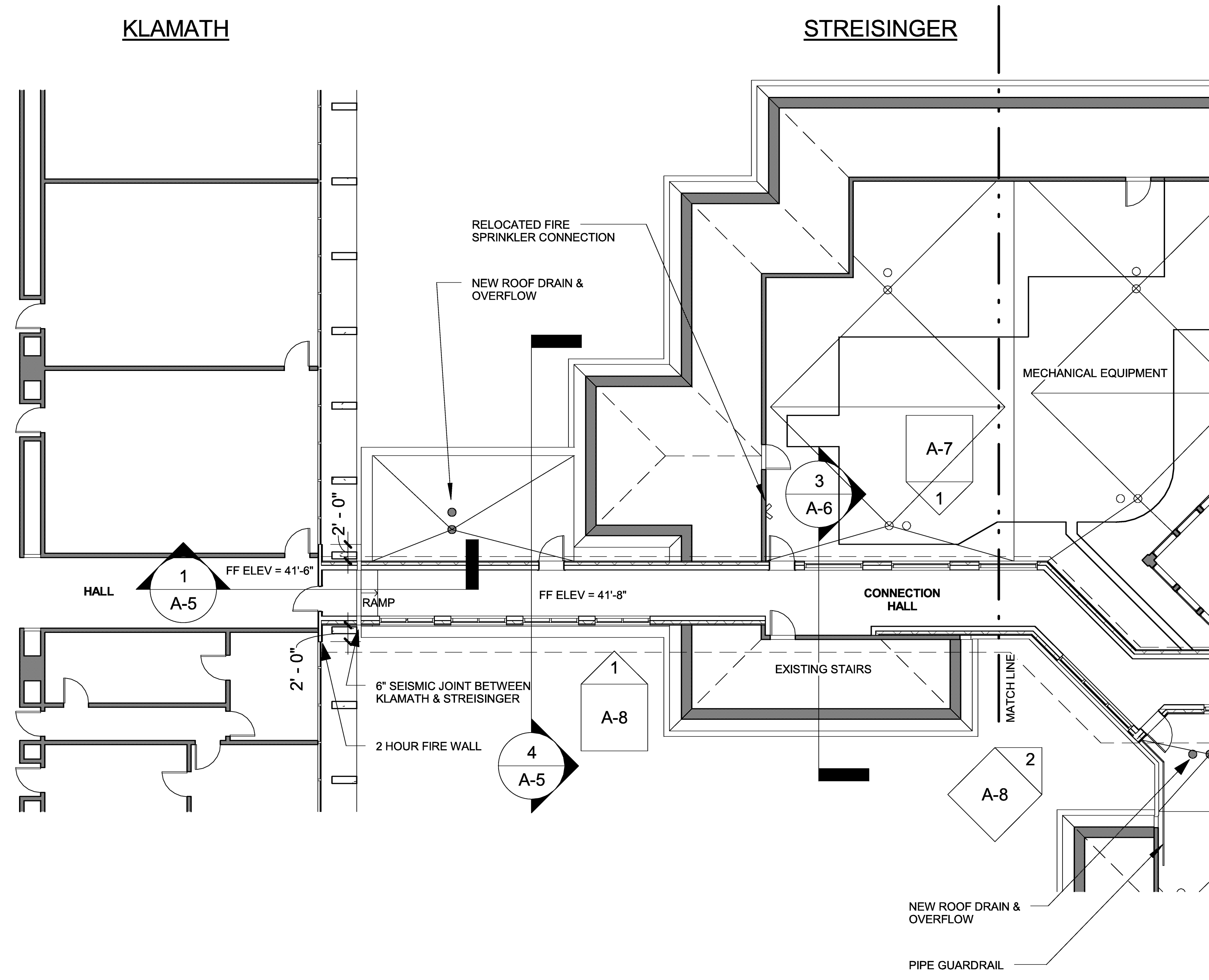
UO LISB

Lewis Integrative Science Building

Preliminary Schematic Design
 August 20, 2009

A-2

**STREISINGER ROOF CONNECTION -
 FLOOR PLAN (EAST)**



HDR Architecture, Inc. / THA Architecture, Inc.

HDR | 1001 SW 5th Avenue | Suite 1900 | Portland, Oregon 97204 | 503.423.3800
 THA | 733 SW Oak Street | Suite 100 | Portland, Oregon 97205 | 503.227.1254

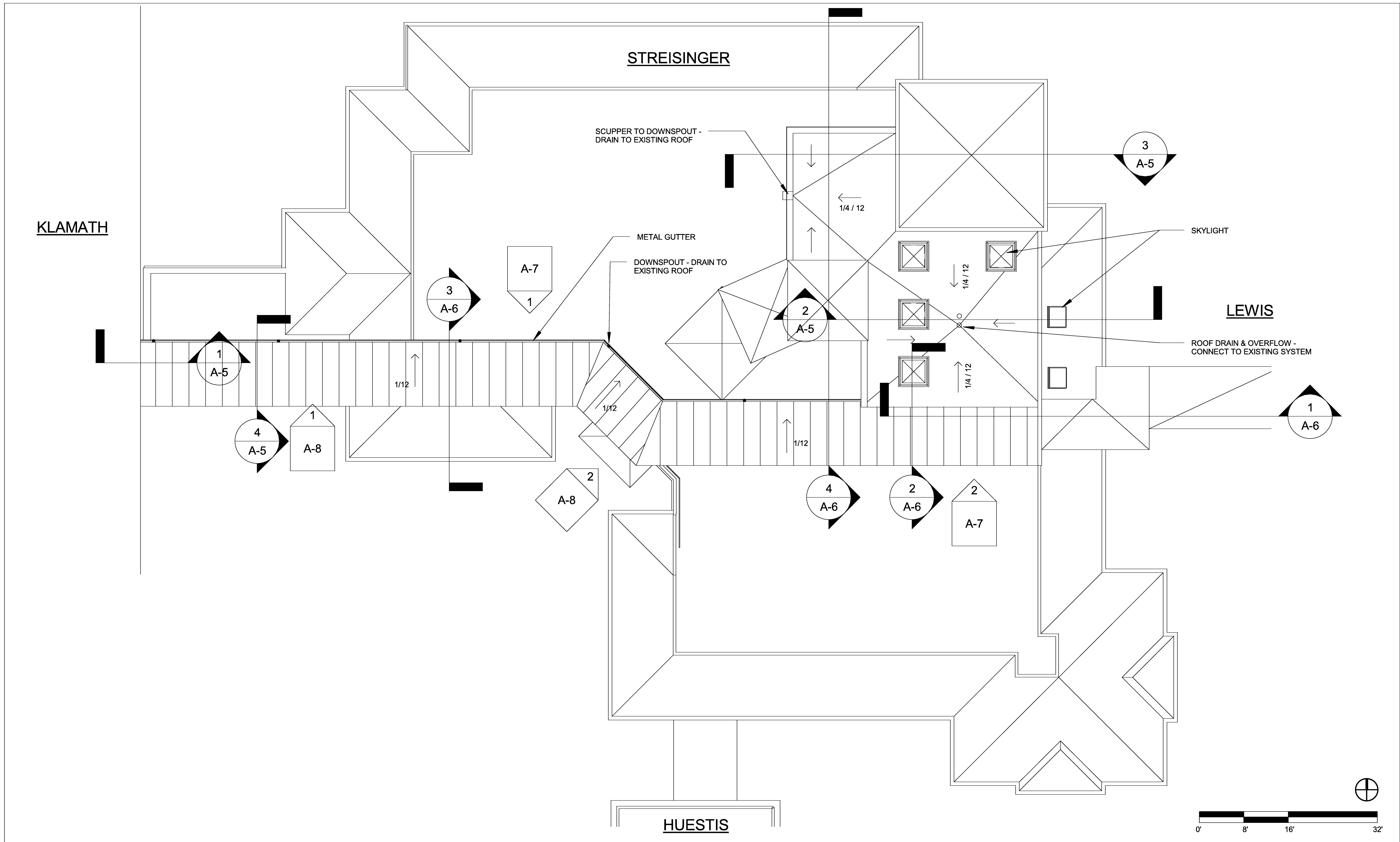
UO LISB

Lewis Integrative Science Building

Preliminary Schematic Design
 August 20, 2009

A-3

STREISINGER ROOF CONNECTION -
 FLOOR PLAN (WEST)



HDR Architecture, Inc. / THA Architecture, Inc.

HDR | 1001 SW 5th Avenue | Suite 1900 | Portland, Oregon 97204 | 503.423.3800
 THA | 733 SW Oak Street | Suite 100 | Portland, Oregon 97205 | 503.227.1254

UO LISB

Lewis Integrative Science Building

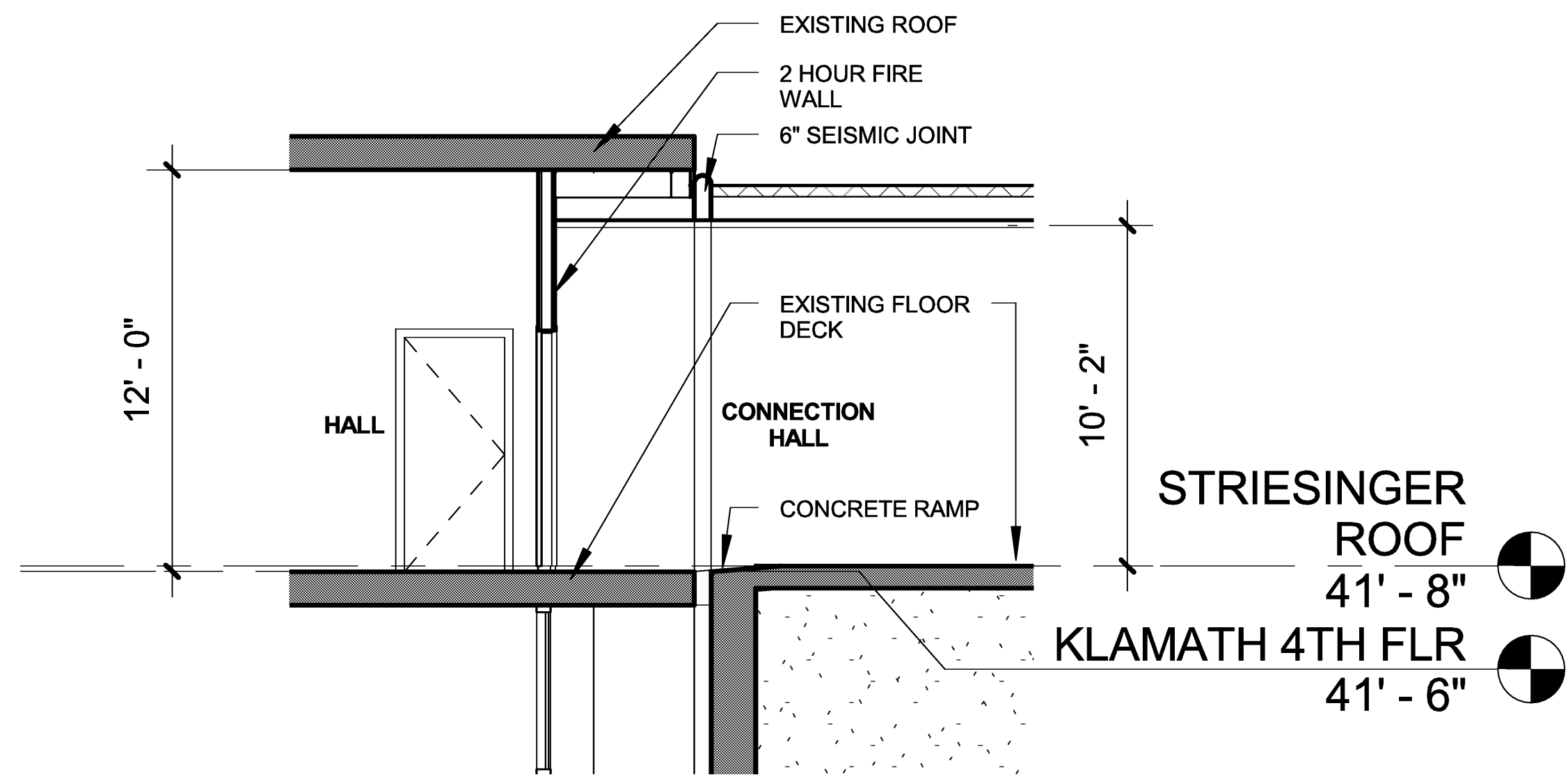
Preliminary Schematic Design
 August 20, 2009

A-4

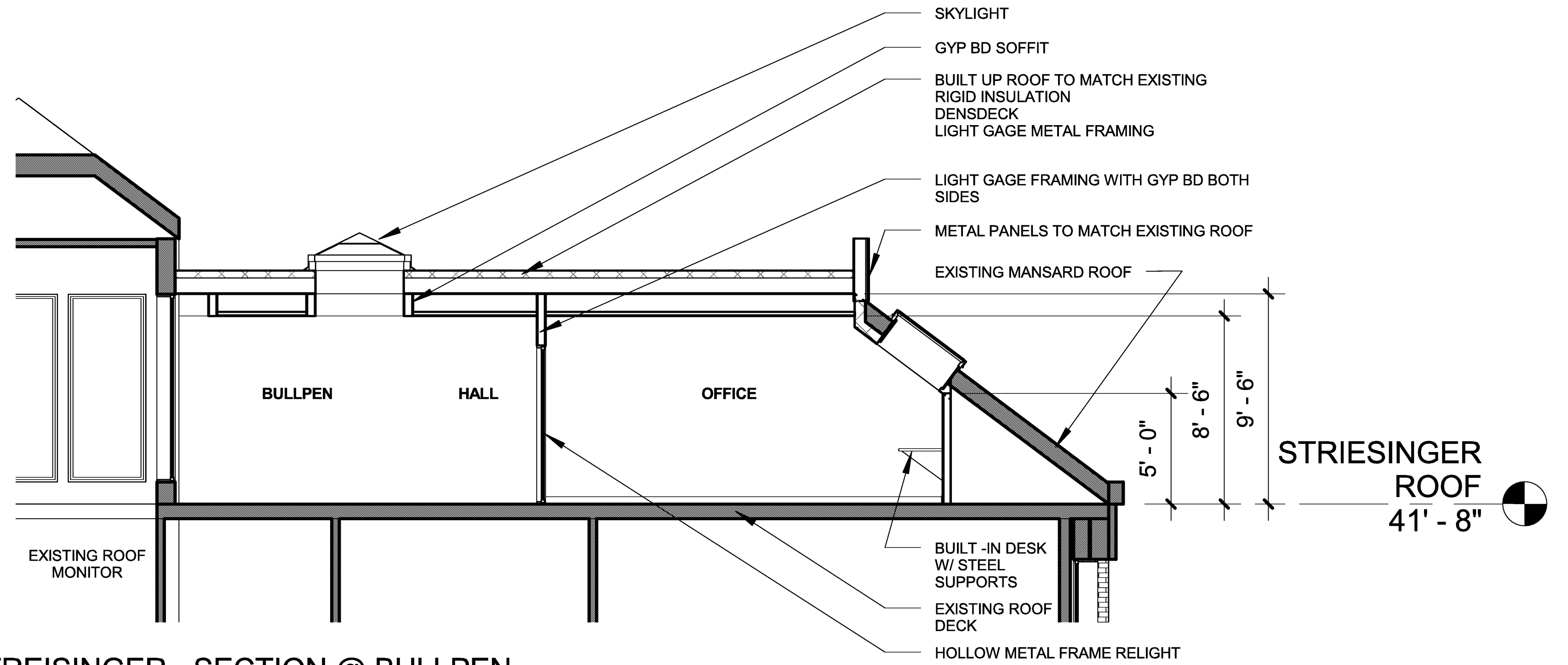
**STREISINGER ROOF CONNECTION -
 ROOF PLAN**

KLAMATH

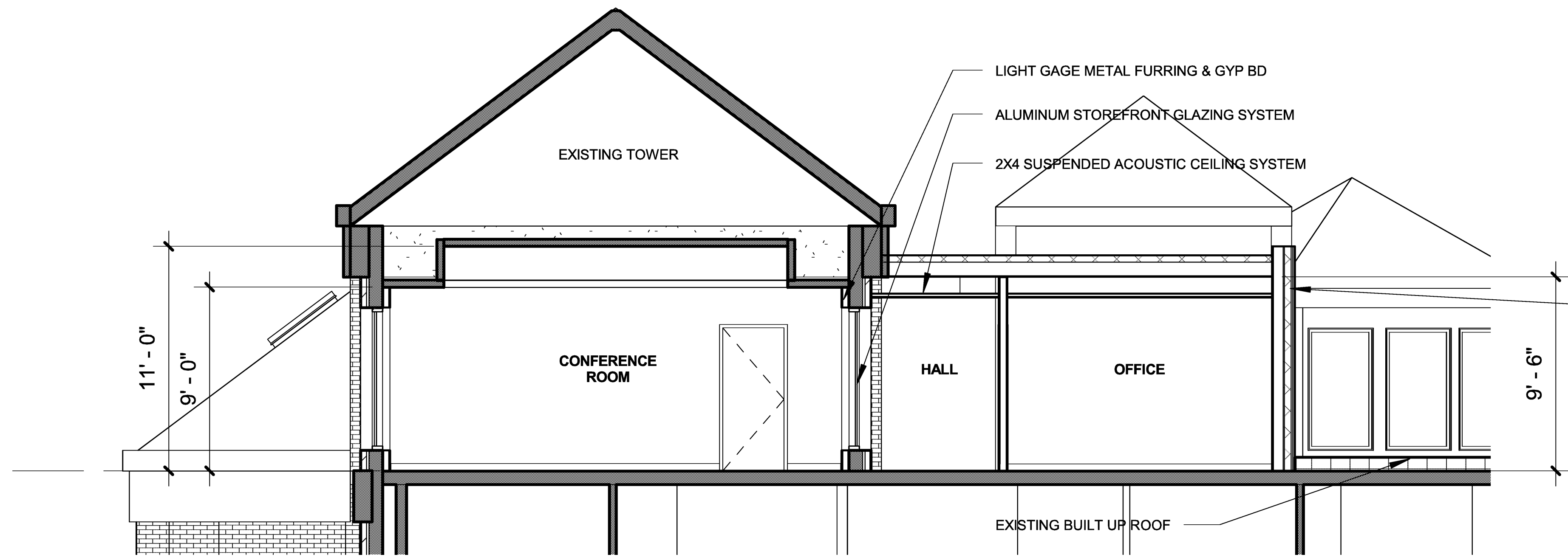
STREISINGER



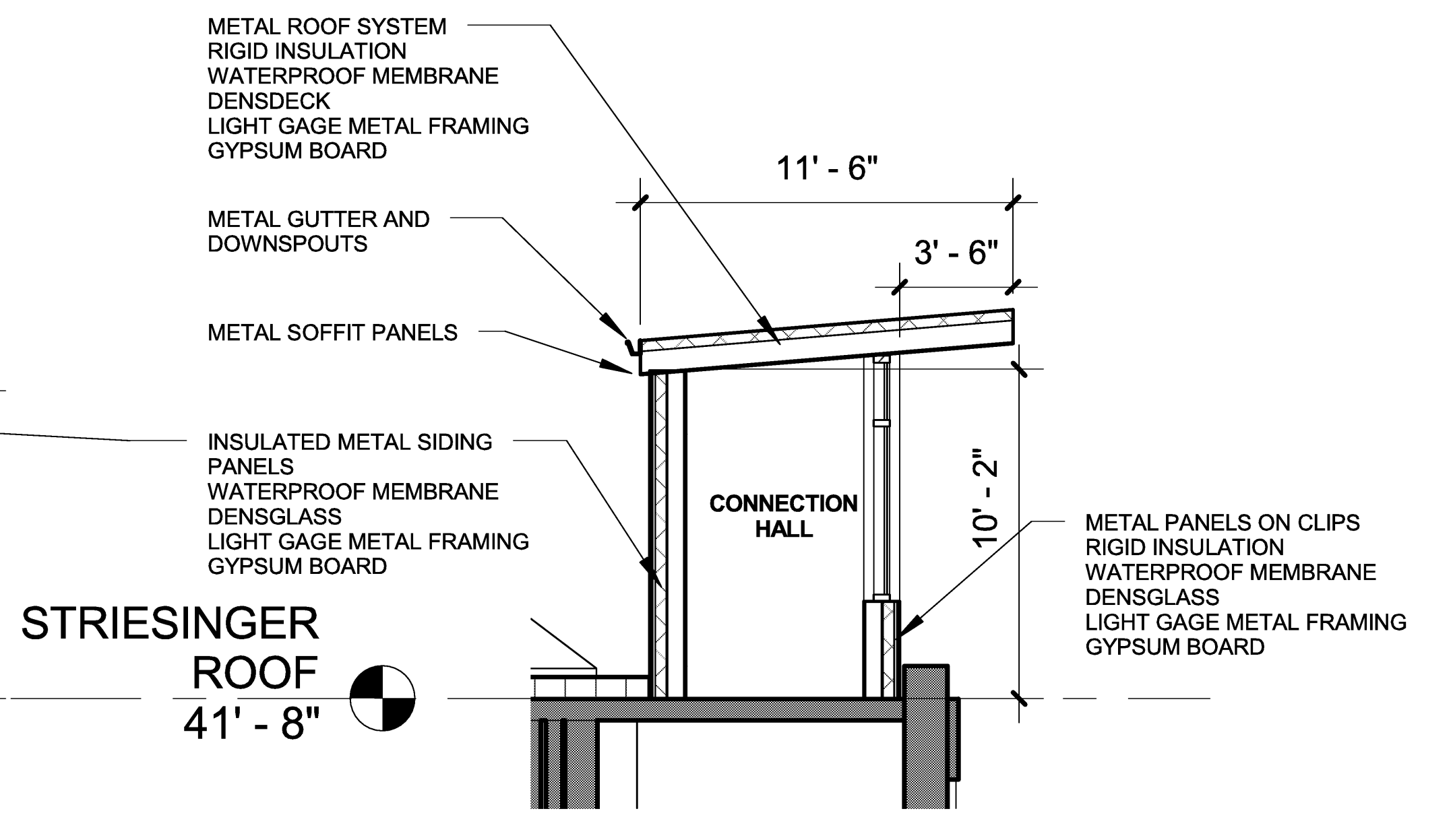
1 STREISINGER - SECTION @ KLAMATH



2 STREISINGER - SECTION @ BULLPEN



3 STREISINGER - SECTION @ CONFERENCE



4 STREISINGER - SECTION @ HALL



HDR Architecture, Inc. / THA Architecture, Inc.

HDR | 1001 SW 5th Avenue | Suite 1900 | Portland, Oregon 97204 | 503.423.3800
THA | 733 SW Oak Street | Suite 100 | Portland, Oregon 97205 | 503.227.1254

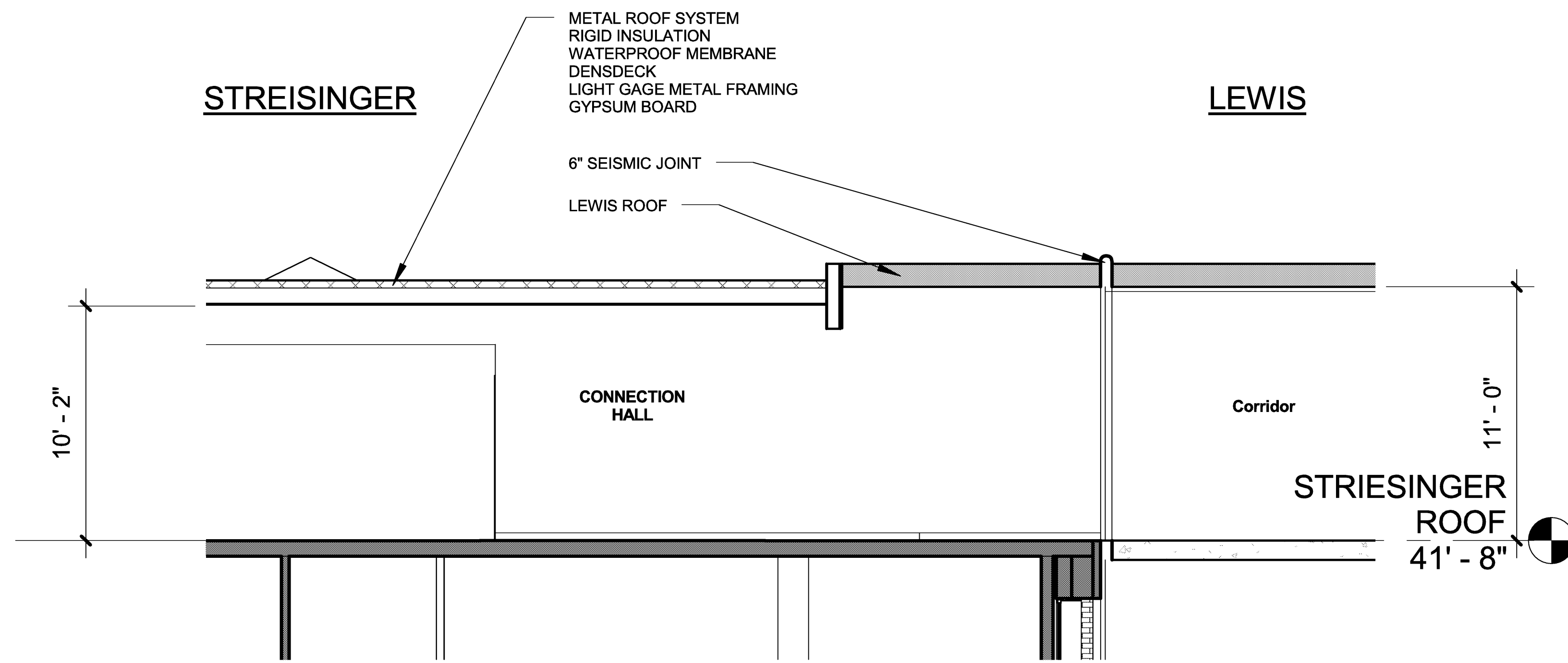
UO LISB

Lewis Integrative Science Building

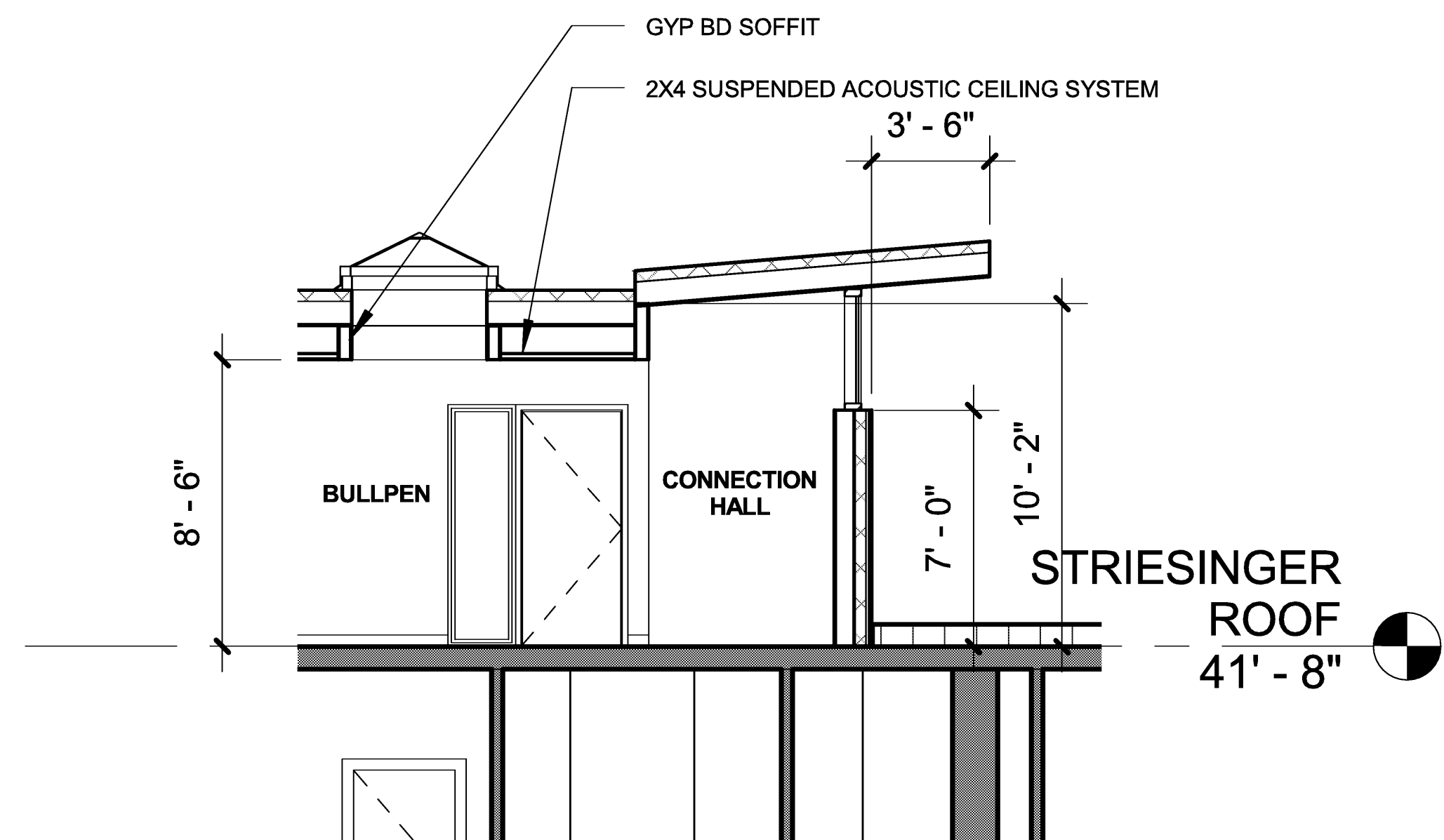
Preliminary Schematic Design
August 20, 2009

A-5

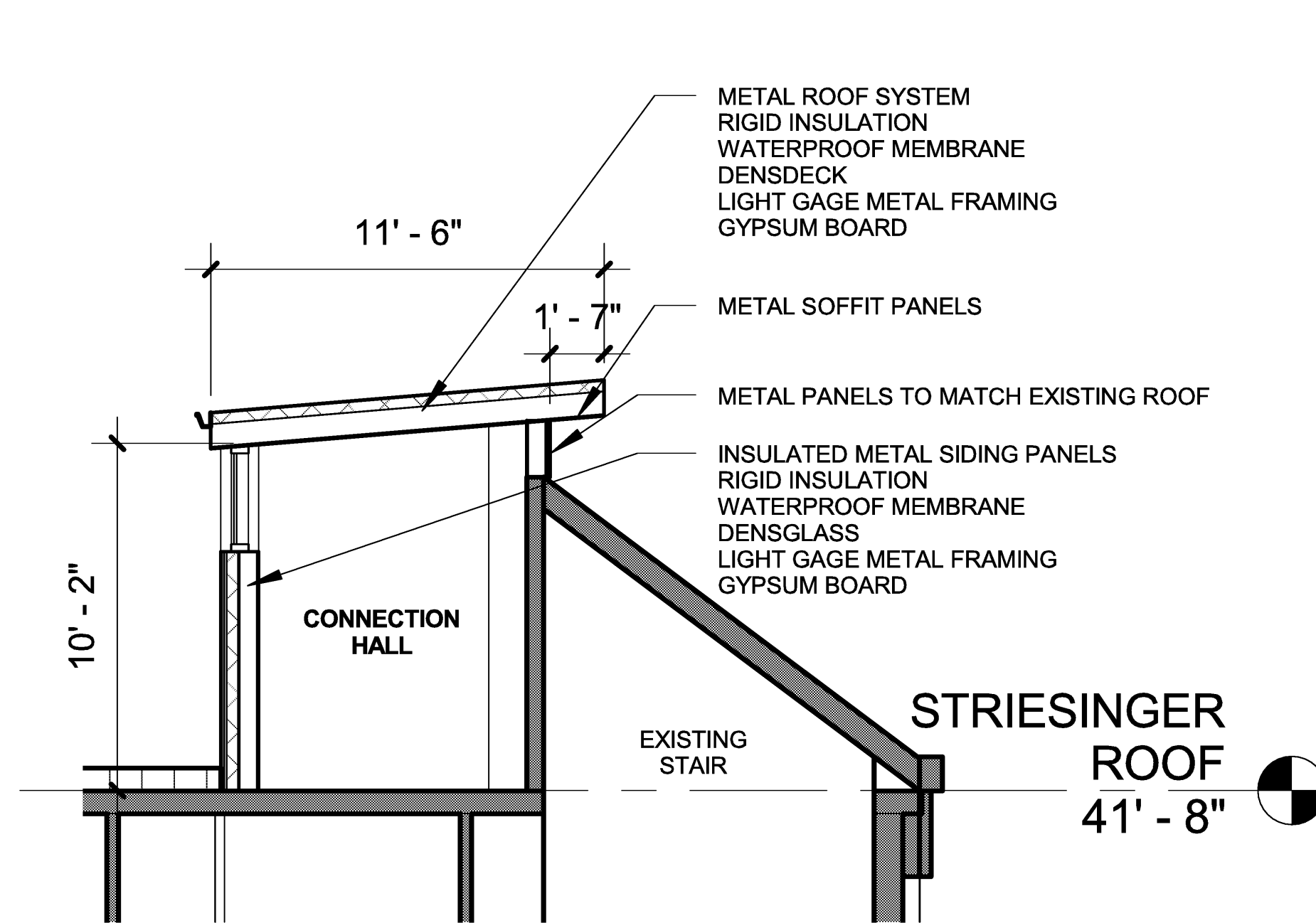
STREISINGER ROOF CONNECTION - SECTIONS



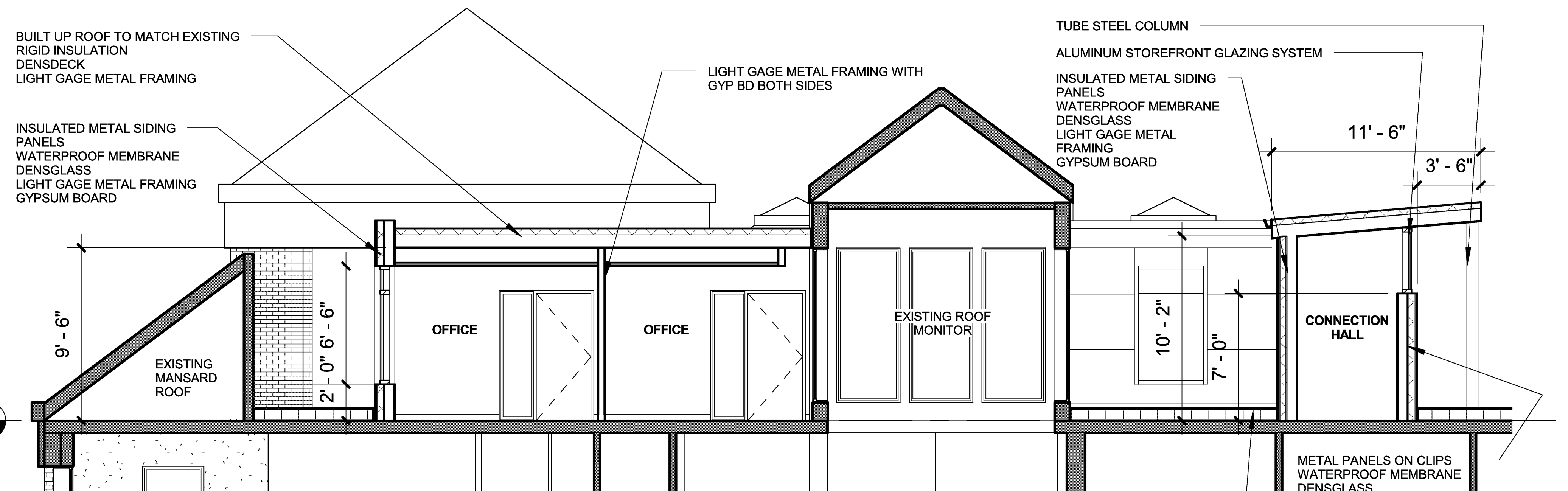
1 STREISINGER - SECTION @ RAMP



2 STREISINGER- SECTION @ TRANSITION
1/8" = 1'-0"



3 STREISINGER - SECTION @ STAIR



4 STREISINGER - SECTION @ MONITOR



HDR Architecture, Inc. / THA Architecture, Inc.

HDR | 1001 SW 5th Avenue | Suite 1900 | Portland, Oregon 97204 | 503.423.3800
THA | 733 SW Oak Street | Suite 100 | Portland, Oregon 97205 | 503.227.1254

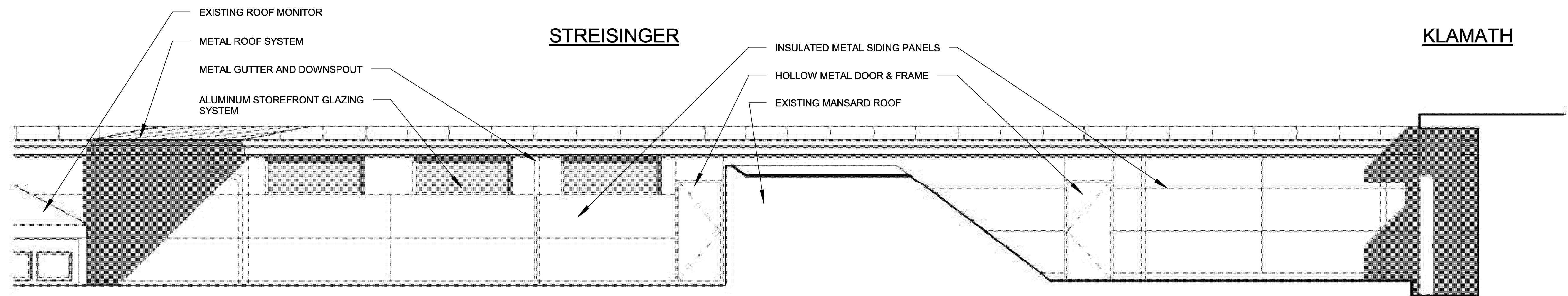
UO LISB

Lewis Integrative Science Building

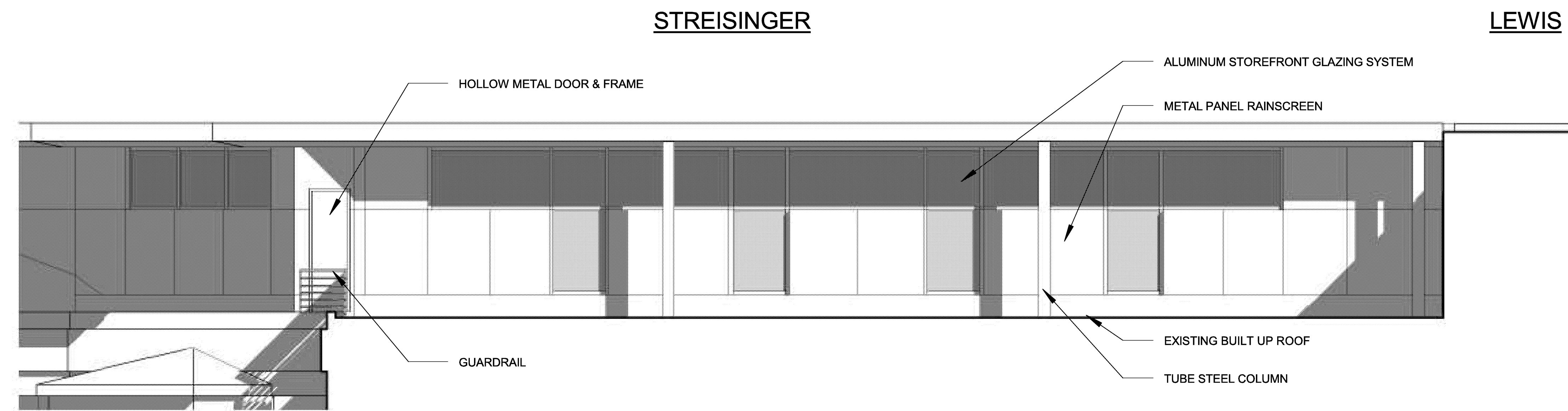
Preliminary Schematic Design
August 20, 2009

A-6

STREISINGER ROOF CONNECTION - SECTIONS



① STREISINGER ROOF CONNECTION -
NORTH ELEVATION
1/8" = 1'-0"



② STREISINGER ROOF CONNECTION -
SOUTH ELEVATION



HDR Architecture, Inc. / THA Architecture, Inc.

HDR | 1001 SW 5th Avenue | Suite 1900 | Portland, Oregon 97204 | 503.423.3800
THA | 733 SW Oak Street | Suite 100 | Portland, Oregon 97205 | 503.227.1254

UO LISB

Lewis Integrative Science Building

Preliminary Schematic Design
August 20, 2009

A-7

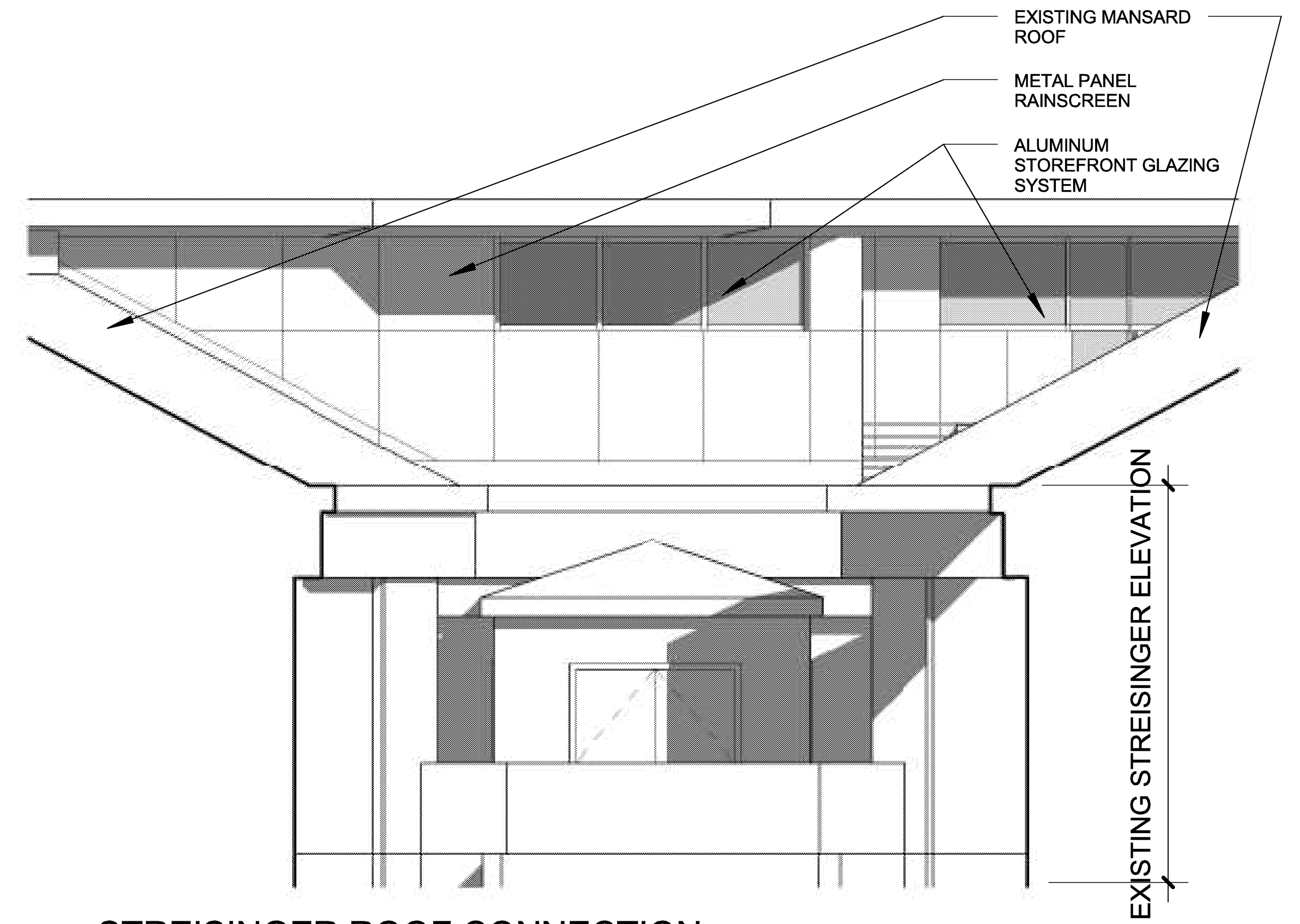
STREISINGER ROOF CONNECTION -
ELEVATIONS

KLAMATH

STREISINGER



1 STREISINGER ROOF CONNECTION -
SOUTHWEST ELEVATION



2 STREISINGER ROOF CONNECTION -
ENTRY ELEVATION
1/8" = 1'-0"



HDR Architecture, Inc. / THA Architecture, Inc.

HDR | 1001 SW 5th Avenue | Suite 1900 | Portland, Oregon 97204 | 503.423.3800
THA | 733 SW Oak Street | Suite 100 | Portland, Oregon 97205 | 503.227.1254

UO LISB

Lewis Integrative Science Building

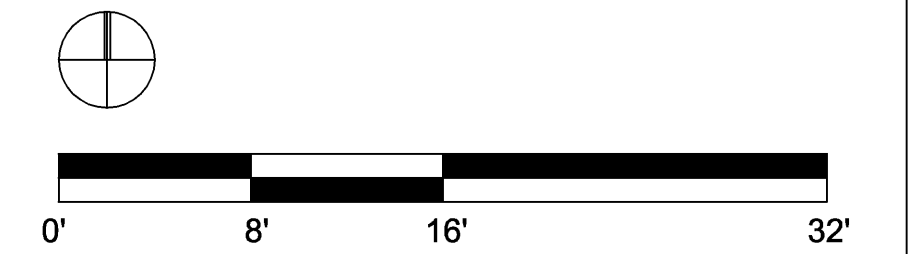
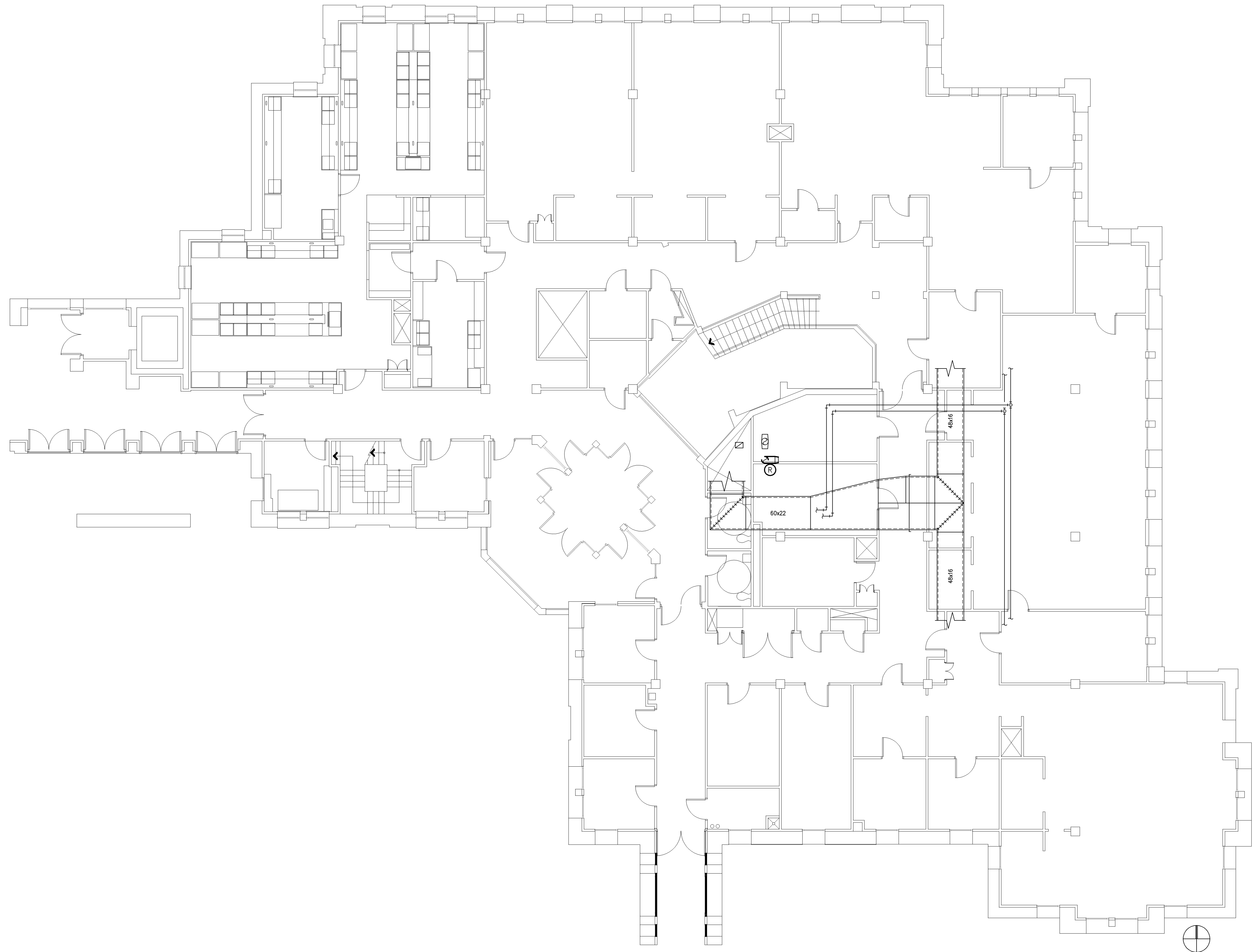
Preliminary Schematic Design
August 20, 2009

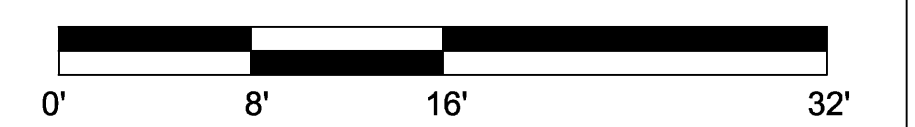
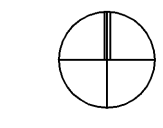
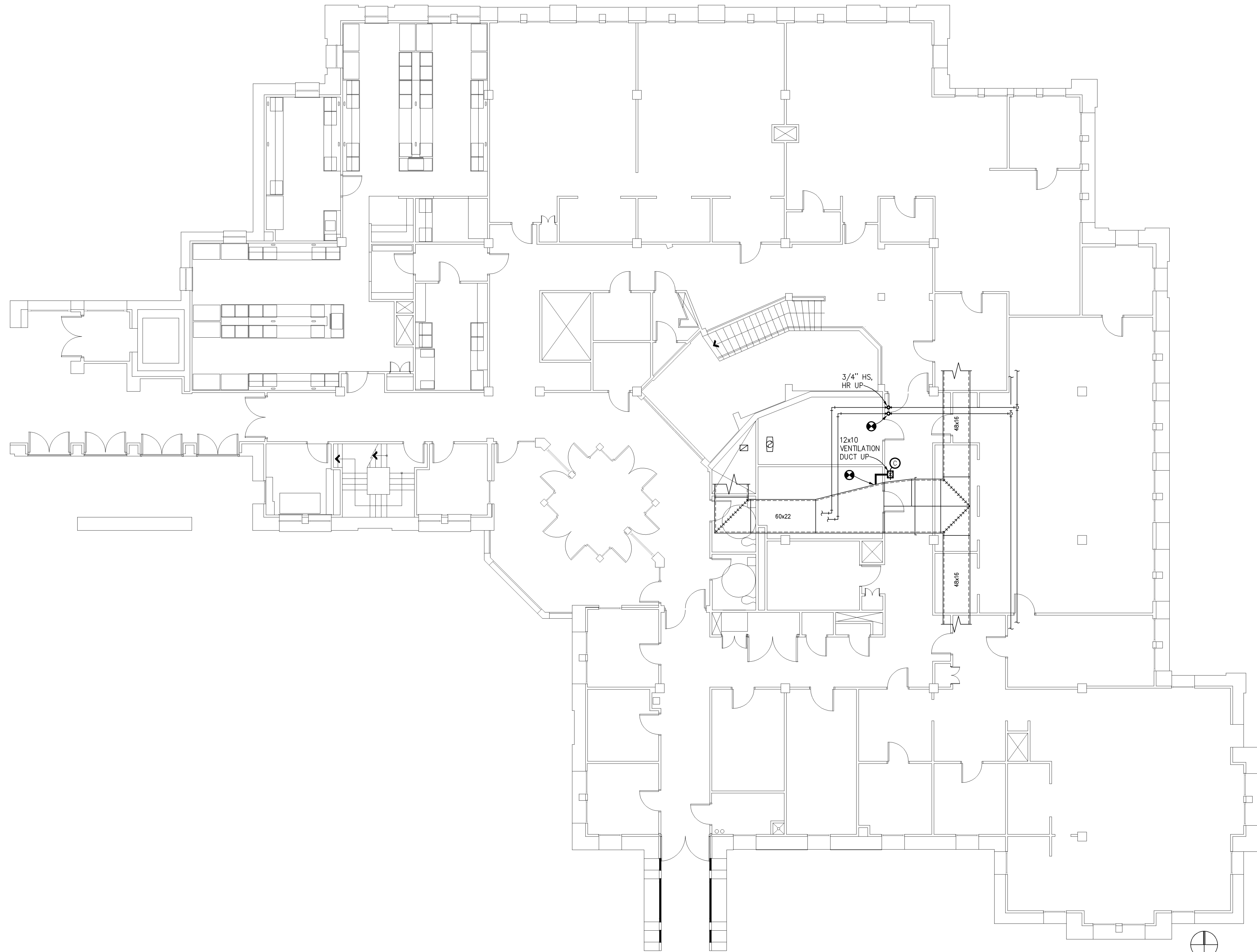
A-8

STREISINGER ROOF CONNECTION -
ELEVATIONS

MECHANICAL SYMBOLS		
SYMBOL	ABBR.	DESCRIPTION
		DUCT TO BE REMOVED
		SUPPLY DUCT UP AND DOWN
		RECTANGULAR DUCT - 1ST DIMENSION IS SIDE SHOWN
		ROUND DUCT
		DUCT WITH RADIUS ELBOW
		DUCT WITH RECTANGULAR ELBOW AND TURNING VANES
		DUCT WITH RECTANGULAR ELBOW AND TURNING VANES
		DUCT TRANSITION
		DUCT DROP/RISE
		MANUAL DAMPER
		PIPE TO BE REMOVED
	HS	HEATING WATER SUPPLY PIPE
	HR	HEATING WATER RETURN PIPE
		VERTICAL PIPE DROP OR RISER
		90 DEGREE ELBOW DOWN
		BRANCH TEE
		TEE UP
	W	SANITARY WASTE PIPE
	V	VENT PIPE
		PIPE TO BE REMOVED
	EF	EXHAUST FAN
	HP	HEAT PUMP
	SDC	SUPPLY DIFFUSER CEILING
	SGW	SUPPLY GRILLE WALL
	(E)	EXISTING
	(R)	REMOVE
		POINT OF CONNECTION BETWEEN NEW & EXISTING WORK
		KEYED NOTE REFERENCE

MECHANICAL SHEET INDEX	
SHEET NO.	SHEET TITLE
M-1	SYMBOLS LIST, SCHEDULES & SHEET INDEX
M-2	THIRD FLOOR - HVAC DEMOLITION
M-3	THIRD FLOOR - HVAC NEW
M-4	ROOF LEVEL - HVAC DEMOLITION
M-5	ROOF LEVEL - HVAC NEW
M-6	THIRD FLOOR - PLUMBING DEMOLITION & NEW
M-7	ROOF LEVEL - PLUMBING DEMOLITION & NEW



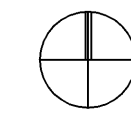
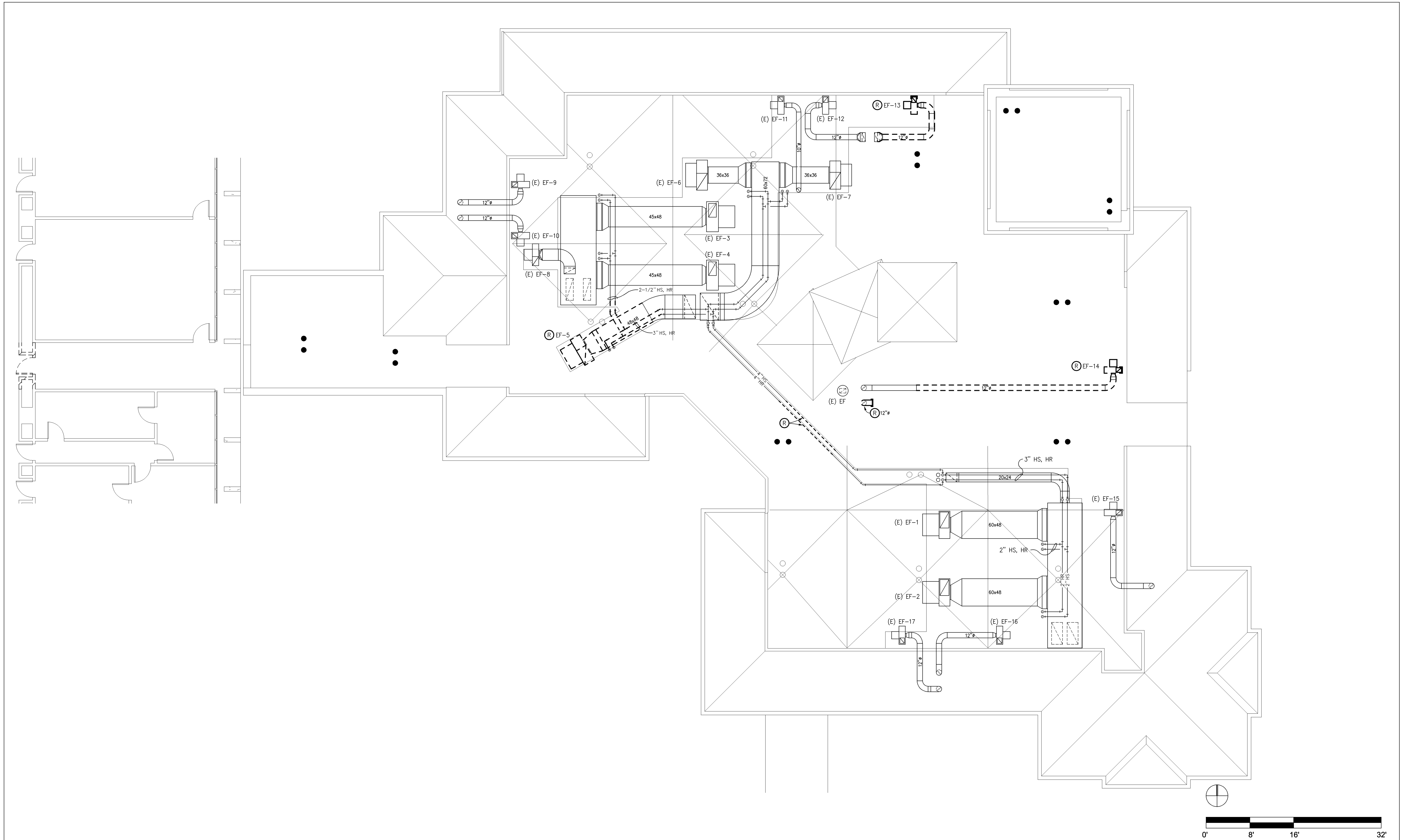


HDR Architecture, Inc. / THA Architecture, Inc.
 HDR | 1001 SW 5th Avenue | Suite 1900 | Portland, Oregon 97204 | 503.423.3800
 THA | 733 SW Oak Street | Suite 100 | Portland, Oregon 97205 | 503.227.1254

BALZHISER & HUBBARD
 ENGINEERS 2100-003-09m3.dwg

UO LISB
 Lewis Integrative Science Building
 August 20, 2009
 Preliminary Schematic Design

M-3
 THIRD FLOOR - HVAC NEW

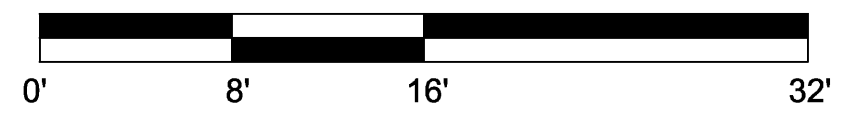
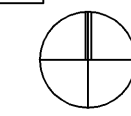
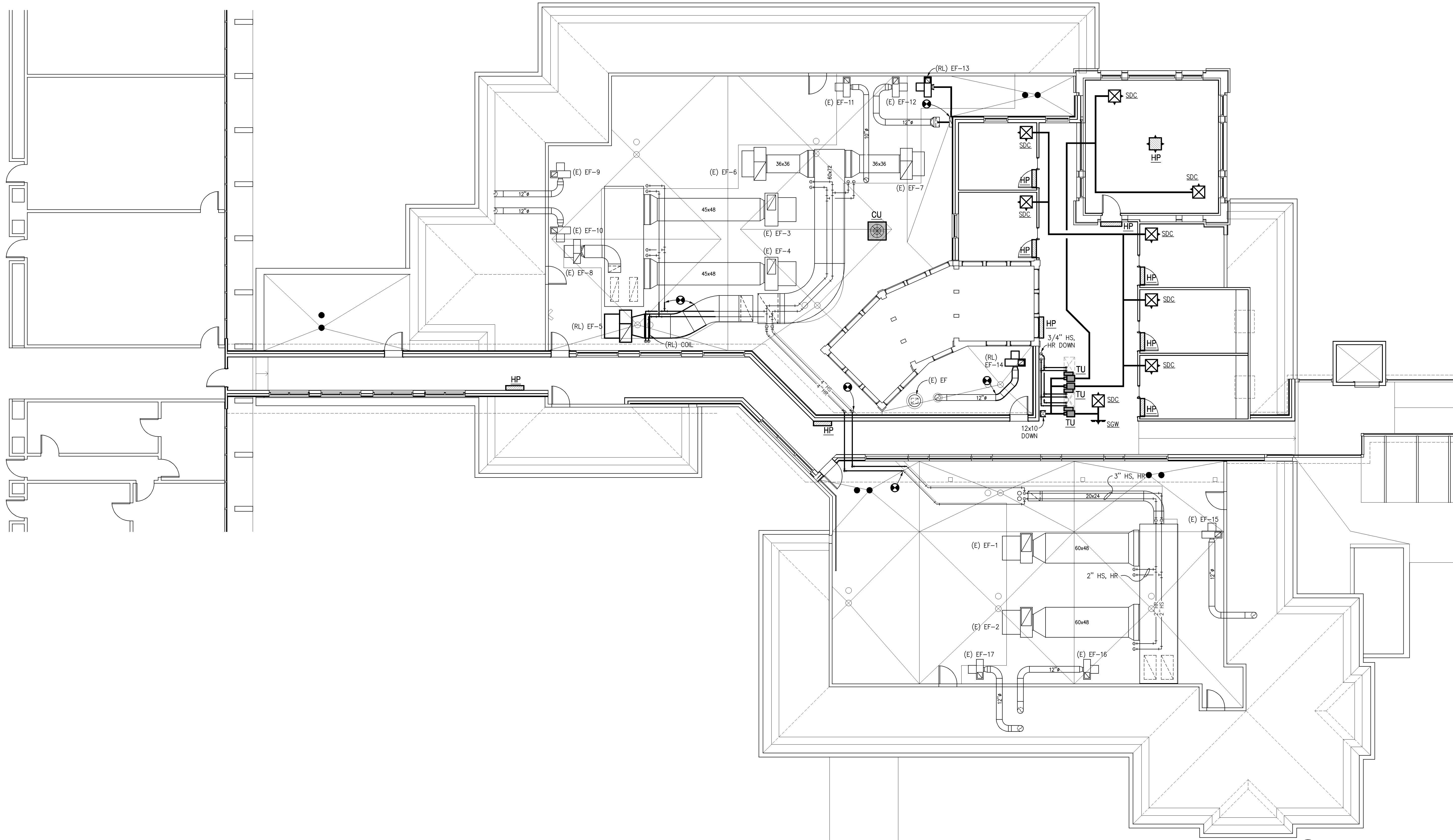


HDR Architecture, Inc. / THA Architecture, Inc.
 HDR | 1001 SW 5th Avenue | Suite 1900 | Portland, Oregon 97204 | 503.423.3800
 THA | 733 SW Oak Street | Suite 100 | Portland, Oregon 97205 | 503.227.1254

BALZHISER & HUBBARD
 ENGINEERS 2100-003-09m4.dwg

UO LISB
 Lewis Integrative Science Building
 August 20, 2009
 Preliminary Schematic Design

M-4
 ROOF LEVEL - HVAC DEMOLITION

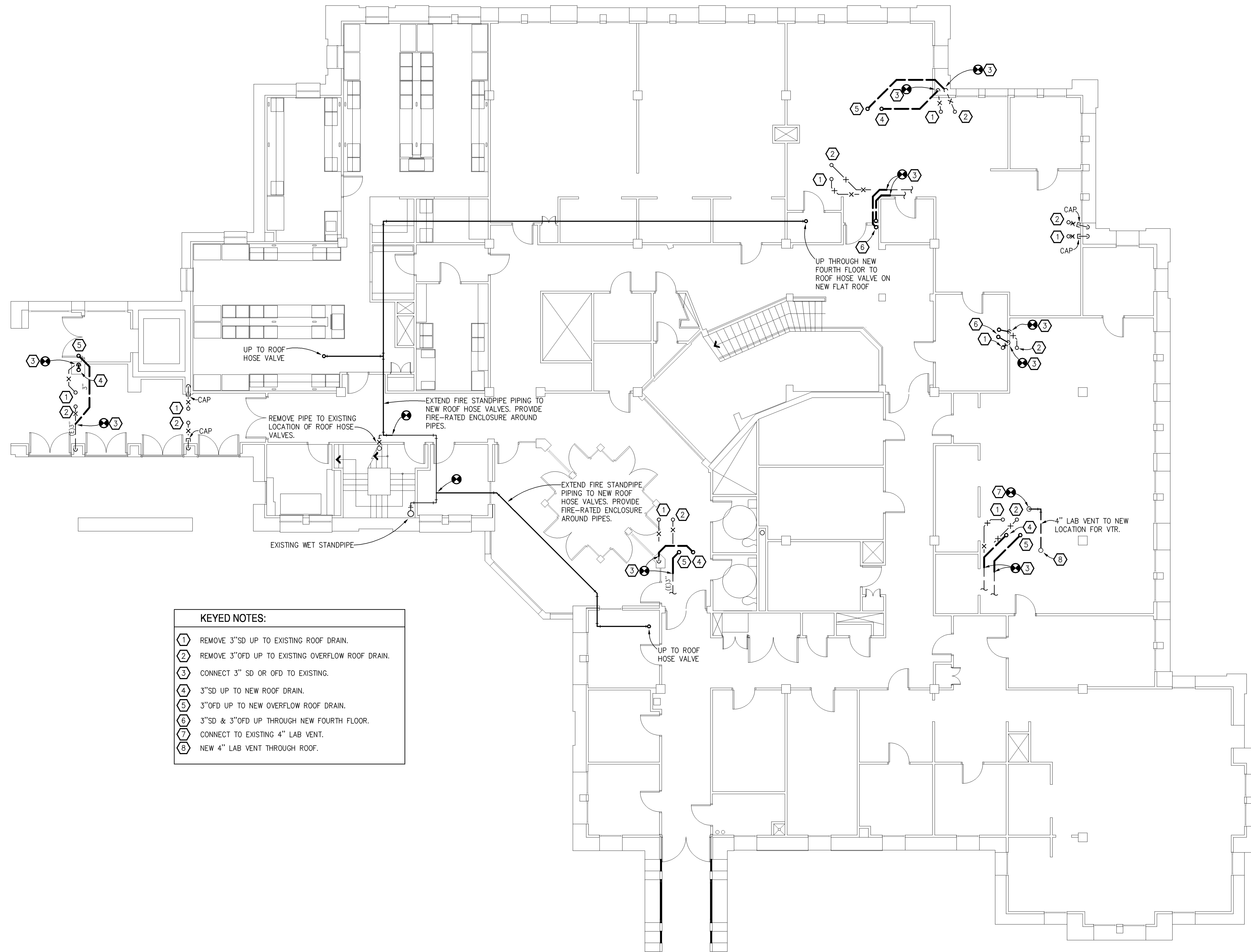


HDR Architecture, Inc. / THA Architecture, Inc.
 HDR | 1001 SW 5th Avenue | Suite 1900 | Portland, Oregon 97204 | 503.423.3800
 THA | 733 SW Oak Street | Suite 100 | Portland, Oregon 97205 | 503.227.1254

BALZHISER & HUBBARD
 ENGINEERS 2100-003-09m5.dwg

UO LISB
 Lewis Integrative Science Building
 August 20, 2009
 Preliminary Schematic Design

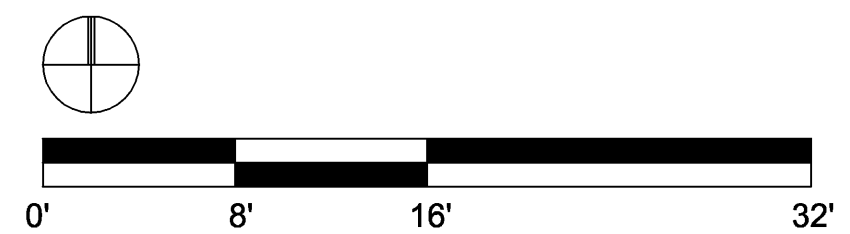
M-5
 ROOF LEVEL - HVAC NEW

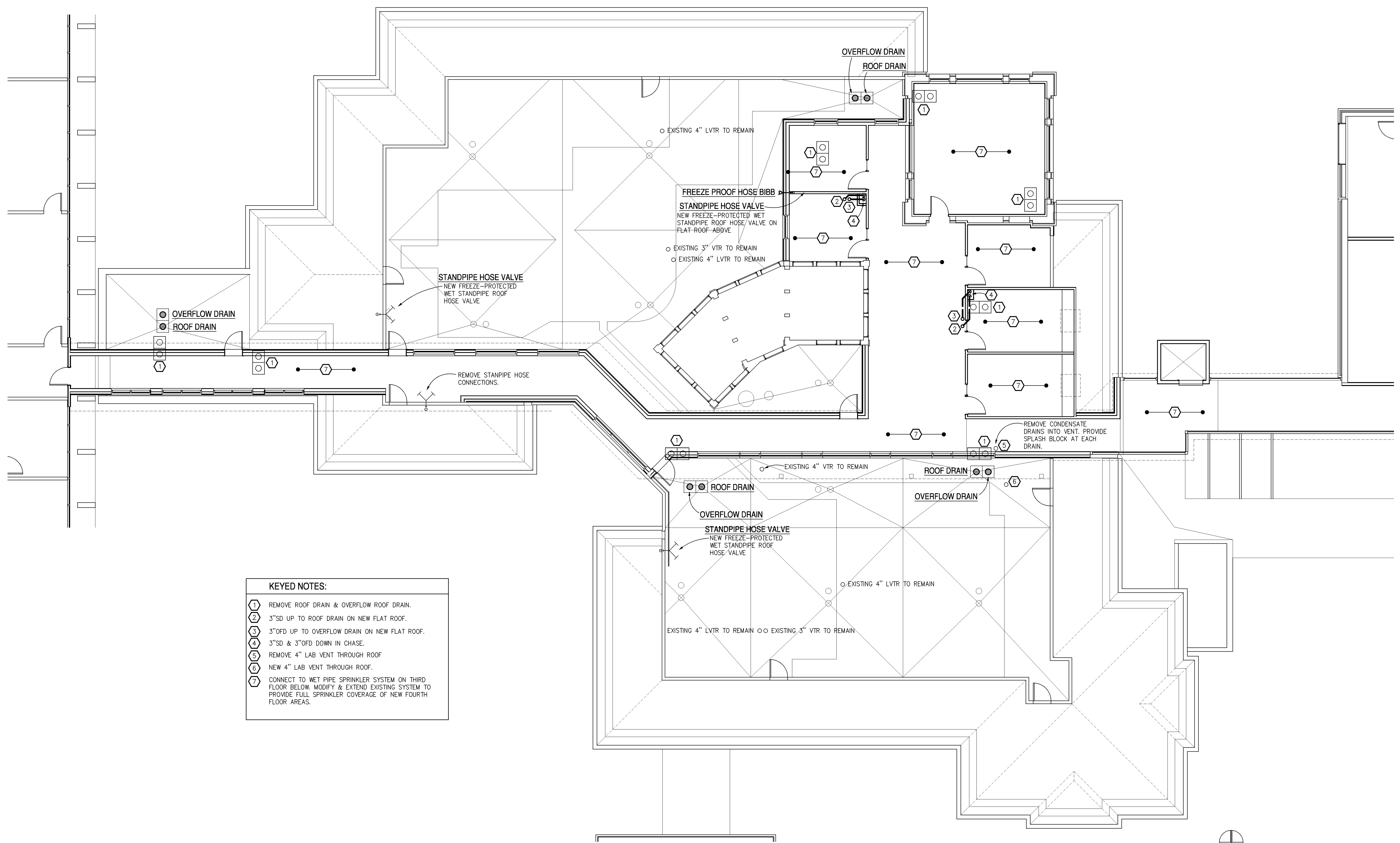


- KEYED NOTES:**
- ① REMOVE 3"SD UP TO EXISTING ROOF DRAIN.
 - ② REMOVE 3"OFD UP TO EXISTING OVERFLOW ROOF DRAIN.
 - ③ CONNECT 3" SD OR OFD TO EXISTING.
 - ④ 3"SD UP TO NEW ROOF DRAIN.
 - ⑤ 3"OFD UP TO NEW OVERFLOW ROOF DRAIN.
 - ⑥ 3"SD & 3"OFD UP THROUGH NEW FOURTH FLOOR.
 - ⑦ CONNECT TO EXISTING 4" LAB VENT.
 - ⑧ NEW 4" LAB VENT THROUGH ROOF.

THIRD FLOOR PLAN - PLUMBING & FIRE PROTECTION

SCALE: 1/8"=1'-0"

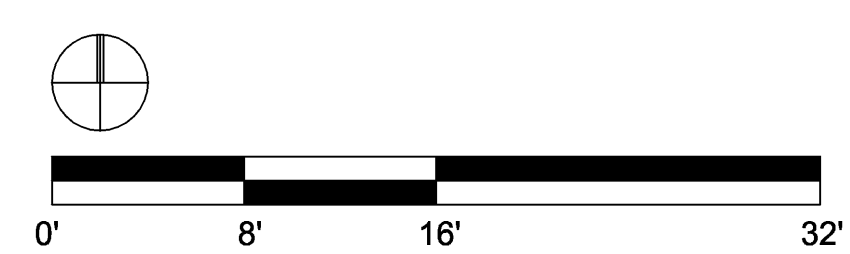




- KEYED NOTES:**
- ① REMOVE ROOF DRAIN & OVERFLOW ROOF DRAIN.
 - ② 3"SD UP TO ROOF DRAIN ON NEW FLAT ROOF.
 - ③ 3"OFD UP TO OVERFLOW DRAIN ON NEW FLAT ROOF.
 - ④ 3"SD & 3"OFD DOWN IN CHASE.
 - ⑤ REMOVE 4" LAB VENT THROUGH ROOF
 - ⑥ NEW 4" LAB VENT THROUGH ROOF.
 - ⑦ CONNECT TO WET PIPE SPRINKLER SYSTEM ON THIRD FLOOR BELOW. MODIFY & EXTEND EXISTING SYSTEM TO PROVIDE FULL SPRINKLER COVERAGE OF NEW FOURTH FLOOR AREAS.

ROOF / FOURTH FLOOR PLAN - PLUMBING & FIRE PROTECTION

SCALE: 1/8"=1'-0"

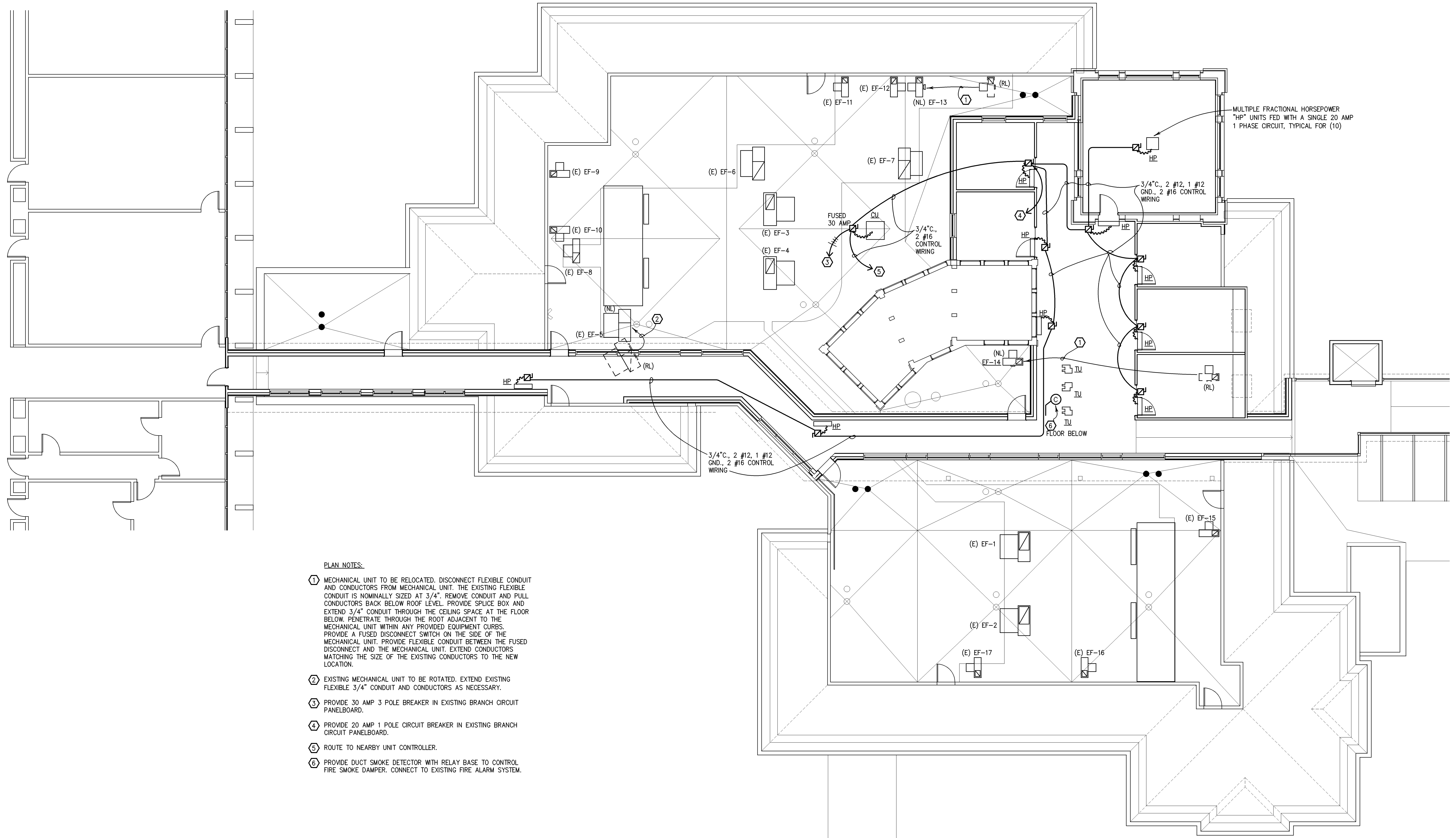


HDR Architecture, Inc. / THA Architecture, Inc.
 HDR | 1001 SW 5th Avenue | Suite 1900 | Portland, Oregon 97204 | 503.423.3800
 THA | 733 SW Oak Street | Suite 100 | Portland, Oregon 97205 | 503.227.1254

BALZHISER & HUBBARD ENGINEERS
 2100-003-09m67.dwg

UO LISB
 Lewis Integrative Science Building
 August 20, 2009
 Preliminary Schematic Design

STREISINGER ROOF CONNECTION
 ROOF / FOURTH FLR - PLUMB & FIRE



- PLAN NOTES:
- ① MECHANICAL UNIT TO BE RELOCATED. DISCONNECT FLEXIBLE CONDUIT AND CONDUCTORS FROM MECHANICAL UNIT. THE EXISTING FLEXIBLE CONDUIT IS NOMINALLY SIZED AT 3/4". REMOVE CONDUIT AND PULL CONDUCTORS BACK BELOW ROOF LEVEL. PROVIDE SPLICE BOX AND EXTEND 3/4" CONDUIT THROUGH THE CEILING SPACE AT THE FLOOR BELOW. PENETRATE THROUGH THE ROOF ADJACENT TO THE MECHANICAL UNIT WITHIN ANY PROVIDED EQUIPMENT CURBS. PROVIDE A FUSED DISCONNECT SWITCH ON THE SIDE OF THE MECHANICAL UNIT. PROVIDE FLEXIBLE CONDUIT BETWEEN THE FUSED DISCONNECT AND THE MECHANICAL UNIT. EXTEND CONDUCTORS MATCHING THE SIZE OF THE EXISTING CONDUCTORS TO THE NEW LOCATION.
 - ② EXISTING MECHANICAL UNIT TO BE ROTATED. EXTEND EXISTING FLEXIBLE 3/4" CONDUIT AND CONDUCTORS AS NECESSARY.
 - ③ PROVIDE 30 AMP 3 POLE BREAKER IN EXISTING BRANCH CIRCUIT PANELBOARD.
 - ④ PROVIDE 20 AMP 1 POLE CIRCUIT BREAKER IN EXISTING BRANCH CIRCUIT PANELBOARD.
 - ⑤ ROUTE TO NEARBY UNIT CONTROLLER.
 - ⑥ PROVIDE DUCT SMOKE DETECTOR WITH RELAY BASE TO CONTROL FIRE SMOKE DAMPER. CONNECT TO EXISTING FIRE ALARM SYSTEM.

